

## Evaluation unit

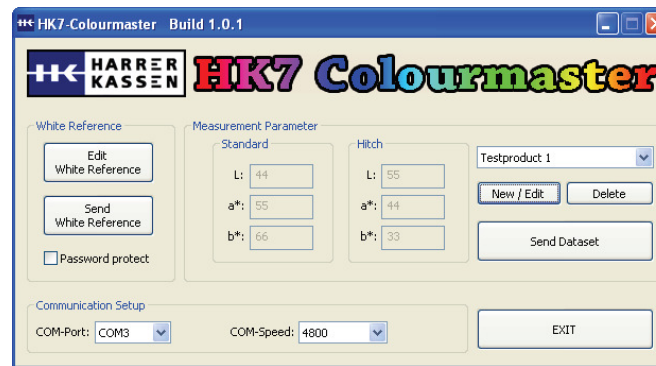
<b>Housing:</b> - Size HxWxD - Enclosure - Colour	- Alu pressure cast housing - 280 x 230 x 110 mm - IP65 / NEMA 4 - RAL 5024
<b>Connections:</b> - Power supply - 4 analog outputs - PC interface - Connection Sensor - Evaluation unit - PROFI - BUS - DP	- 100-240V AC - 0/4 - 20 mA - RS 232 oder RS 485 - fibre optic - optional
<b>User interface:</b> - Operating - Monitoring	- 6 Softkeys integrated in keypad - 2x24 characters in illuminated display
<b>Ambient condition:</b> - Environment temperature	- -20° C - +40° C

## Sensor

<b>Housing:</b> - Size HxWxD - Enclosure - Colour	- Alu pressure case housing - 120 x 120 x 90 mm - 220 x 120 x 90 mm - 280 x 230 x 110 mm - IP65 / NEMA 4 - RAL 5024
<b>Sensor</b>	- LED's
<b>Ambient conditons:</b> - Environment temperature - Product temperature	- -20° C - +40° C - >0° C - +70° C

## Calibration/ Software

For the calibration you can use our user-friendly software SPECTER and Colourmaster which is easy to use.



**Harrer & Kassen GmbH**  
**Am Heschen 4 - 6**  
**D-75328 Langenbrand**

**Tel.: +49 (0)7084/9248-0**  
**Fax: +49 (0)7084/9248-29**  
**www.harrerkassen.com**  
**info@harrerkassen.com**

HARRER & KASSEN GMBH

**HK 7**  
**SPECTROMETER**

**CONTINUOUS IN-LINE**  
**COLOUR MEASUREMENT**



### Principle:

Continuous, controlled LED illumination and identification of the product colour in the colour space after CIELab or ICUMSA- standard.

The evaluation results is in the visible light sector from 390nm - 720nm.

The distance between sensor system and product has to be kept constant.

The four measurement results  $L^*$ ,  $a^*$ ,  $b^*$  and  $dE$  are available at four separate 0/4 - 20 mA channels.

### OUR KNOW HOW! YOUR SUCCESS!



Real-time measurement over the whole production!



Reliable trend measurement to realising a production control loops!



Production with constant and documentable quality!



Saving through prevention of wastage an rejects!



Unique NIR - LED technology!



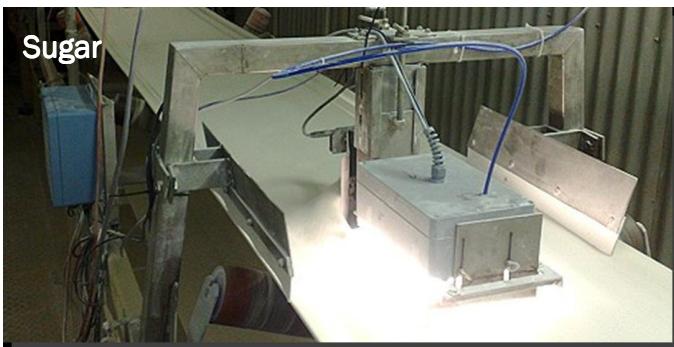
Ten years lifetime NIR - LED´s!



Maintenance free!



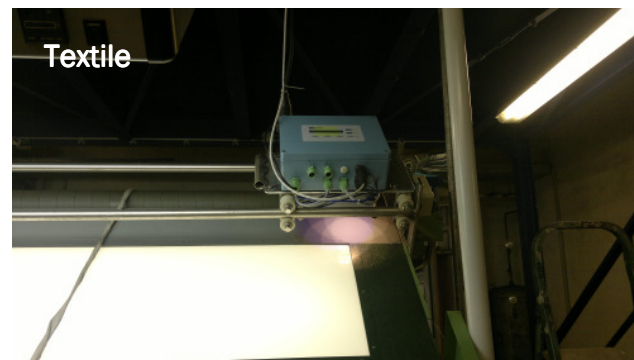
Easy to use software!



Sugar



Artificial casing



Textile